

project Waarschoot (Belgium)

Site description:

Due to activities of a dry-cleaning facility, a soil & groundwater contamination was found under the concrete floor of the buildings. Contaminants of concern were PCE, TCE, DCE & VC. Purpose of the EnISSA campaign was to delineate both source and plume area

Challenges:

Since the source area was located inside the buildings, our team had to work closely with the facility manager to complete the project on schedule. Special precautions were taken when working with the geoprobe rig to prevent any hinder for the dry cleaning activities.



Location:

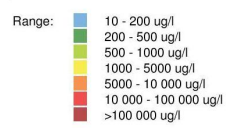
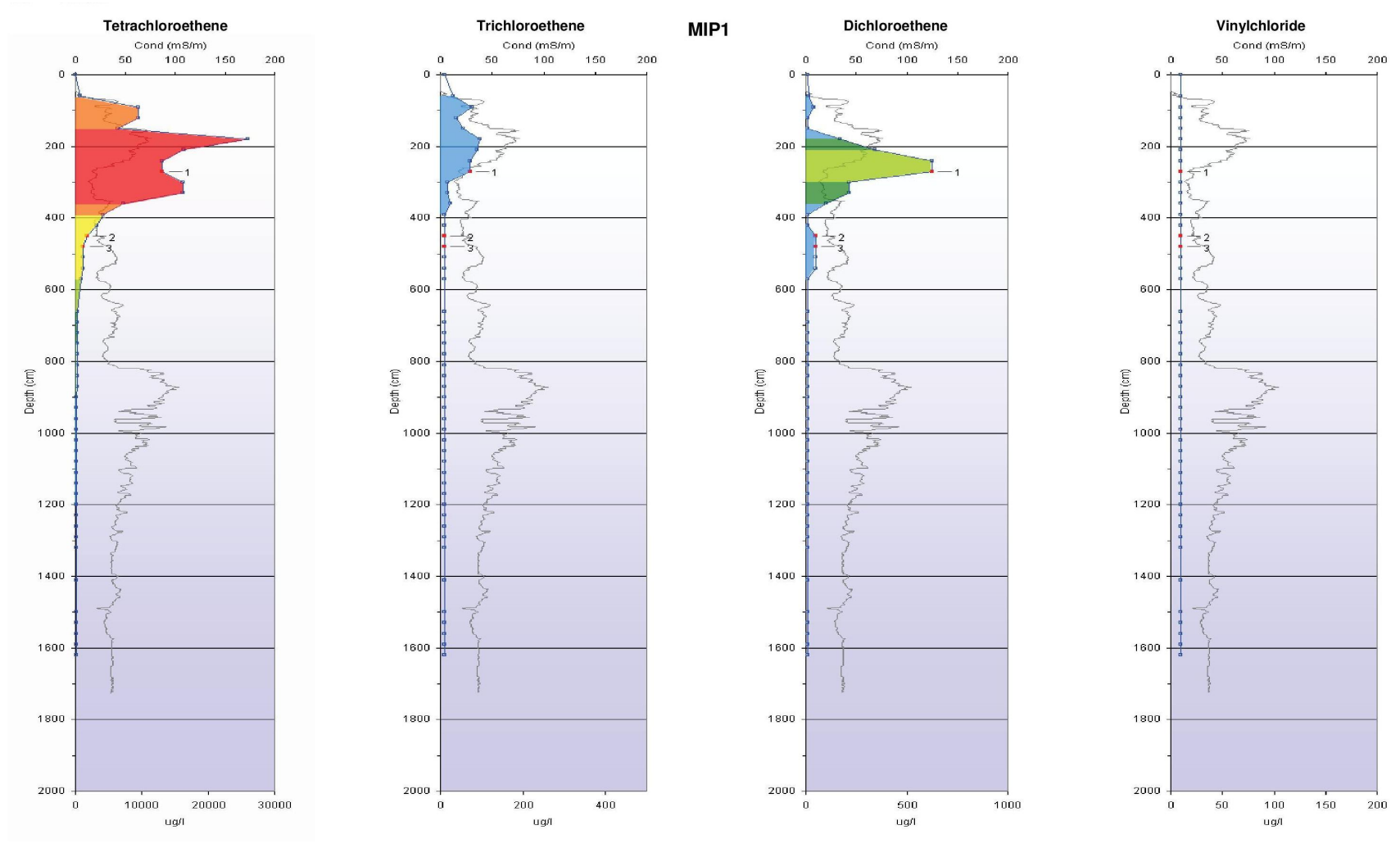
Waarschoot (Belgium)

Contamination:

PCE, TCE, DCE & VC

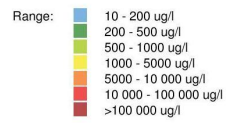
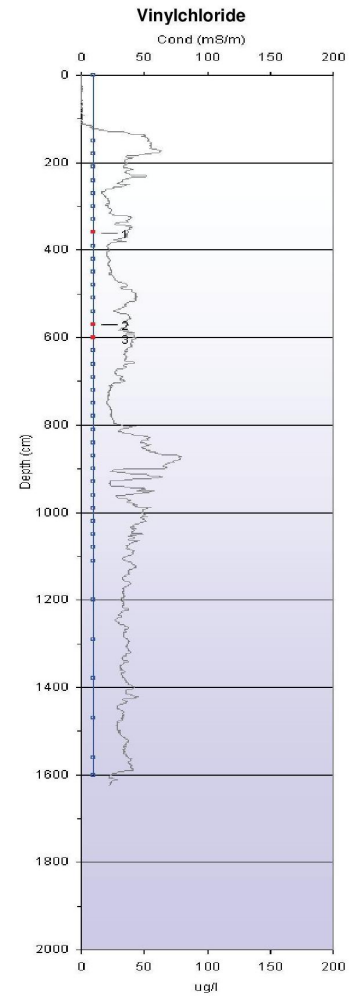
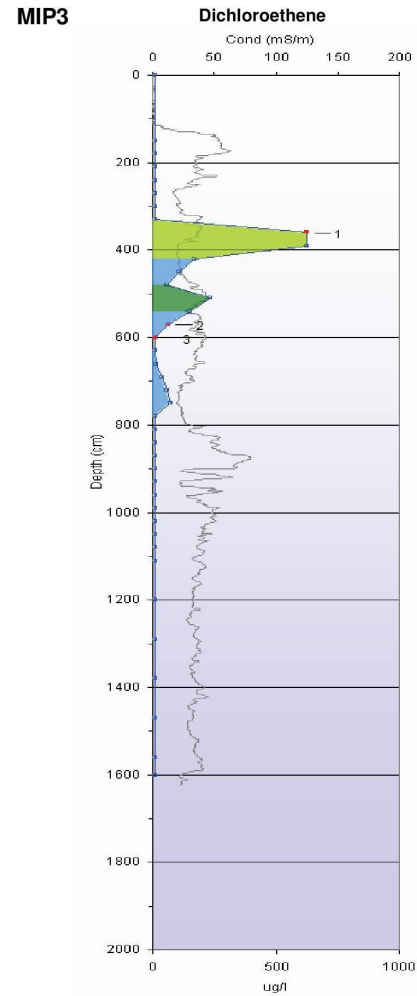
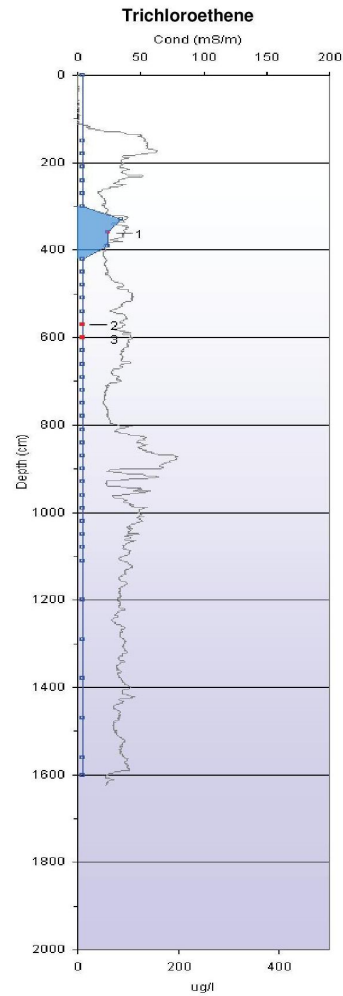
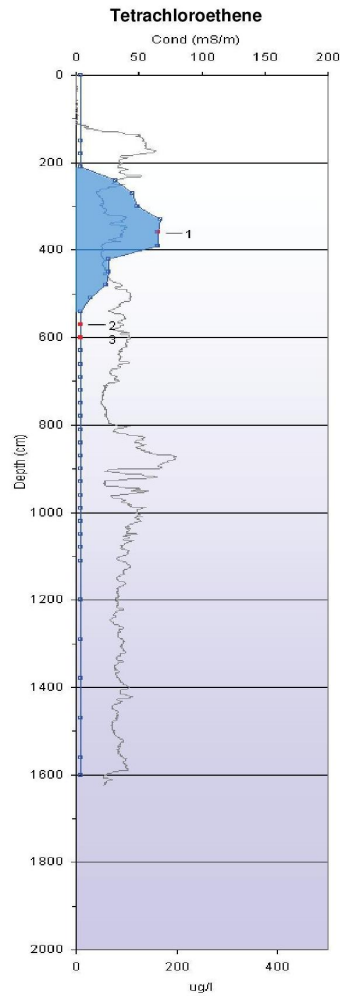
Aim EnISSA:

delineation source & plume
area



GCMS method comprises:

- PCE
- TCE
- DCE
- VC
- 111-TCA
- 112-TCA
- 12-DCA
- 11-DCA
- Freon 113
- Target method
- Characterization method



- GCMS method comprises:
- PCE
 - TCE
 - DCE
 - VC
 - Freon 113
 - 112-TCA
 - 12-DCA
 - 11-DCA
 - Freon 113
 - 111-TCA
 - Target method
 - Characterization method